



SpotBot 4G Plus

User Manual



INTRODUCTION

Every year more than \$12B in goods are lost and over \$100B are damaged during transport. Companies are working to connect their supply chain to improve visibility of where shipments are, what conditions they are exposed to and who should be accountable for loss or damage.

The SpotBot® 4G Plus is the ideal solution for connecting you to your supply chain. Delivering tri-axial impact, temperature, and humidity monitoring along with location tracking, the SpotBot connects you to your assets via the SpotSee Cloud. Log-in to see the status of your shipment and receive alerts throughout its journey.

SpotBot 4G+ Features & Benefits

- Monitor location, impact, temperature and humidity
- 4G LTE-M and connectivity
- Access to information through a secure, dedicated web portal
- Accurate reporting of unacceptable conditions
- Custom, timely alerts of changing conditions of your shipment

CONFIGURE THE SPOTBOT 4G+

The SpotBot 4G+ is configured over the air by accessing the SpotSee Cloud. Users can change unit configurations as well as consignment and reporting parameters.

BATTERY REPLACEMENT

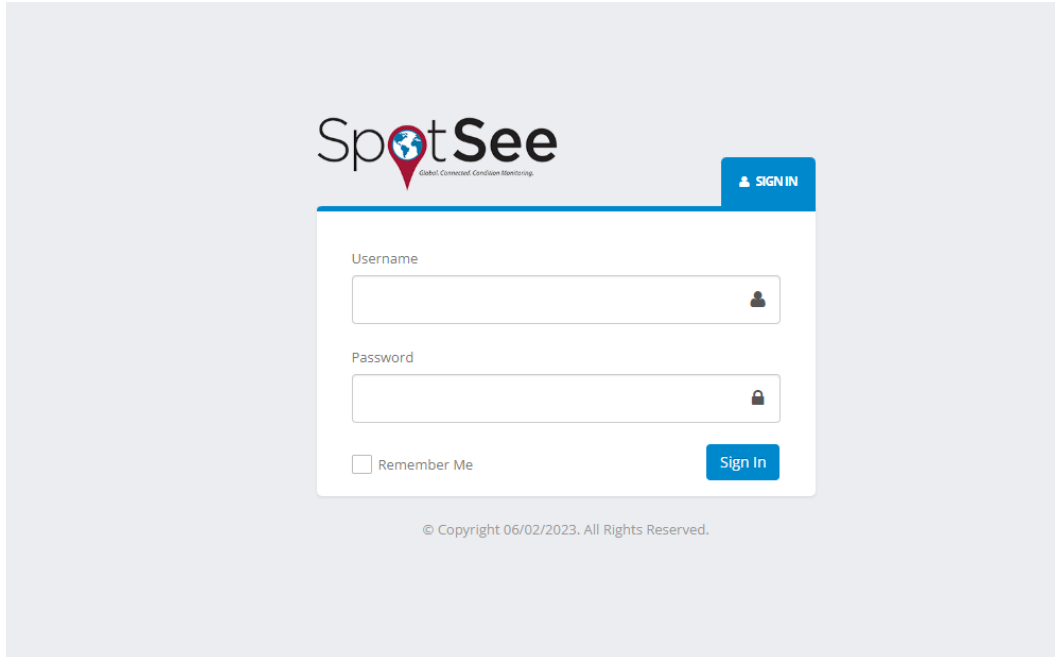
The SpotBot 4G+ has a custom battery pack. The battery will last between 1 and 3 years depending on unit configuration. When necessary, a battery replacement is available from SpotSee. Please contact your SpotSee representative for more information.

FIRMWARE UPDATES

The SpotBot 4G+ firmware is automatically upgraded over the air. There is no need to connect the unit to an external computer. When the SpotBot 4G+ is connected to the cellular network, any available firmware upgrades will automatically download to the unit.

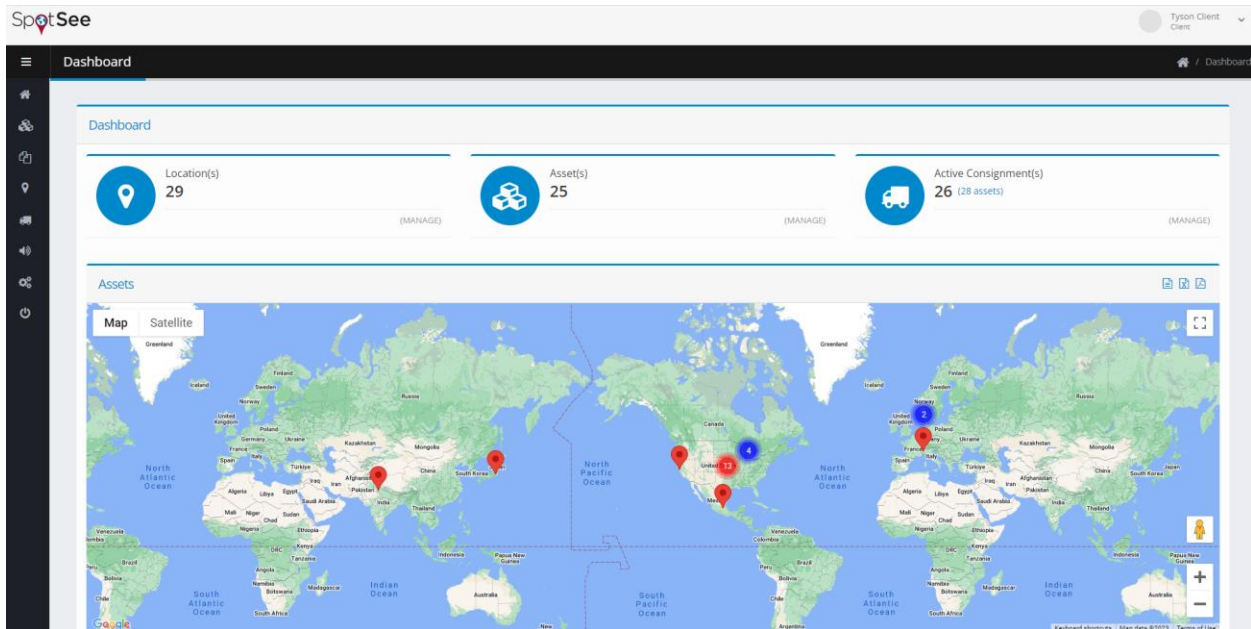
SPOTBOT 4G+ CLOUD PLATFORM

The SpotSee Cloud allows you to monitor and control your assets from any location. To log into the platform, go to the URL: track.spotsee.io



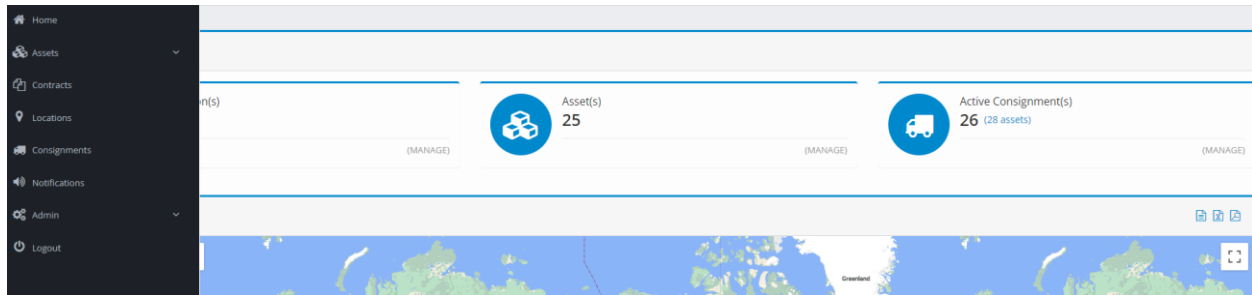
DASHBOARD

After logging into the SpotSee cloud platform, the customer DASHBOARD is displayed. This screen provides a view of the number of Locations, Assets, and Consignments along visibility to the last position reported for active assets.



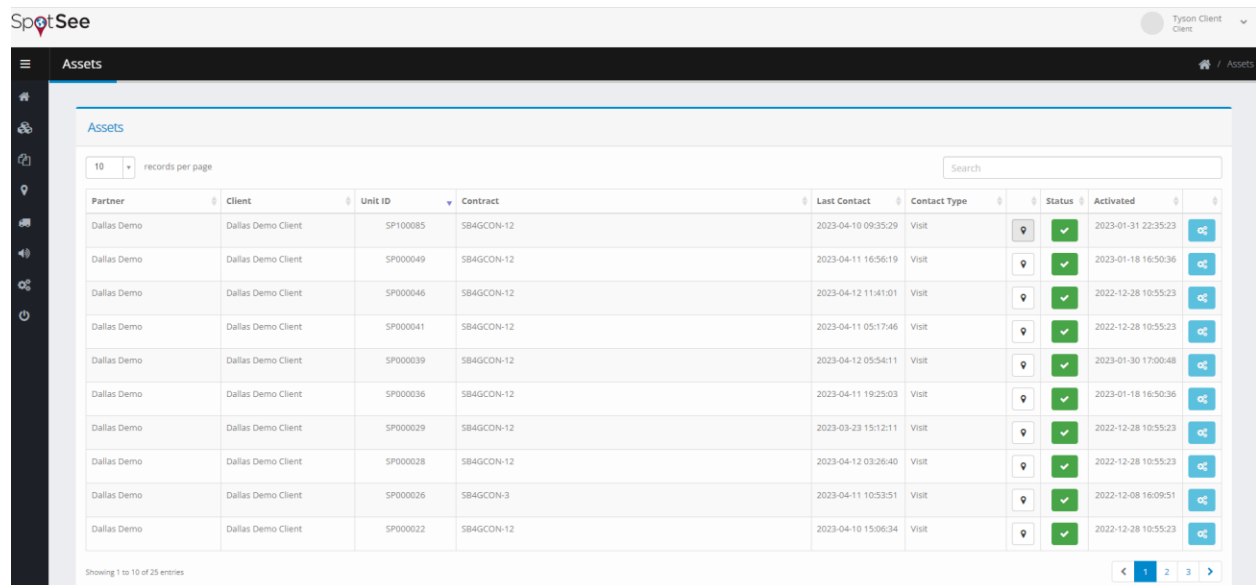
NAVIGATION BAR

When the cursor is positioned over the left side of the DASHBOARD, the NAVIGATION BAR will appear. This menu allows the user to choose the appropriate screens for configuration and visualization of assets, contracts, locations, consignments, notifications, and general administrative settings.



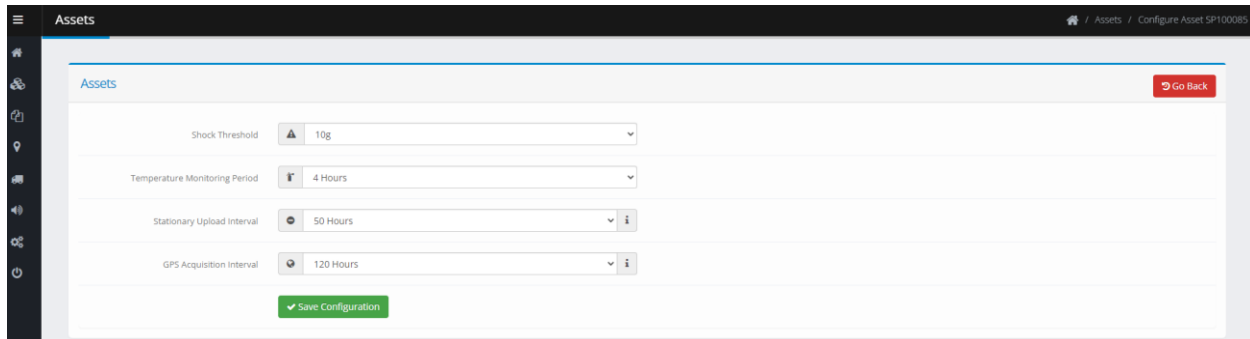
ASSETS SCREEN

The Assets Screen provides a list of all the SpotBot4G+ units along with relevant information regarding the device.



- **Partner:** Company name of the SpotSee distributor partner (if applicable) that sold the unit
- **Client:** Company name of the Client (purchaser) of the SpotBot 4G+ Unit
- **Unit ID:** Serial number of the unit (this number can be found on the front label of the device)
- **Contract:** Service contract associated with the device (3 Month, 6 Month, or 12 Month)
- **Last Contact:** Date and time when the unit last reported to the SpotSee Cloud
- **Contact Type:** Methodology used to deliver the most recent position of the unit (Visit = WiFi, Cell = Cellular Network)
- **Status:** Activation status of the unit (green check mark = active)

- **Activated:** Date & time the unit was activated
- **Settings Icon:** Navigation to Asset Configuration screen



Drop down menus may be used to adjust the following parameters:

- **Shock Threshold:** Range of impacts that will be recorded/reported by the unit (3-100G or Disable Shock Sensor)
- **Temperature Monitoring Period:** Interval for the device to record/report temperature/humidity data (15 Minutes - 150 Hours or Disable Temperature/Humidity Sensor)
- **Stationary Upload Interval:** Time interval for data upload when no movement is detected (2-100 Hours)
- **GPS Acquisition Interval:** Time interval to attempt GPS location acquisition how often the unit gets a GPS location (48-144 hours)

The setting change is done over the air; a cell connection is needed for the configuration to be changed so it may take up to 24 hours for the update to be reflected in the unit. Select SAVE CONFIGURATION when you have completed the changes.

CONTRACTS SCREEN

The Contracts Screen provides a simple view of the contract length associated with each ASSET owned by the CLIENT.

Partner	Client	Unit ID	Contract	Status	Activated
Dallas Demo	Dallas Demo Client	SP100085	SB4GCON-12	✓	2023-01-31 22:35:23
Dallas Demo	Dallas Demo Client	SP000049	SB4GCON-12	✓	2023-01-18 16:50:36
Dallas Demo	Dallas Demo Client	SP000046	SB4GCON-12	✓	2022-12-28 10:55:23
Dallas Demo	Dallas Demo Client	SP000041	SB4GCON-12	✓	2022-12-28 10:55:23

- **Partner:** Company name of the SpotSee distributor partner (if applicable) that sold the unit
- **Client:** Company name of the Client (purchaser) of the SpotBot 4G+ Unit
- **Unit ID:** Serial number of the unit (this number can be found on the front label of the device)
- **Contract:** Service contract associated with the device (3 Month, 6 Month, or 12 Month)
- **Activated:** Date & time the unit was activate

LOCATIONS SCREEN

The Locations screen allows the user to set the origin point and destination point(s) for shipments. At a minimum, origin and destination LOCATIONS must be created to generate a CONSIGNMENT (or trip).

Partner	Client	Site Code	Name	Address	Latitude	Longitude	Radius	Return	Default
Dallas Demo	Dallas Demo Client	YarPack Shipping Inc	YarPack Shipping Inc.	2212 Woodcrest Dr, McKinney, TX 75071, USA	33.222984	-96.646088	500	<input type="checkbox"/>	<input type="checkbox"/>
Dallas Demo	Dallas Demo Client	Walmart Arkansas	Walmart Arkansas	4208 Pleasant Crossing Blvd, Rogers, AR 72758, USA	36.282128	-94.151975	500	<input type="checkbox"/>	<input type="checkbox"/>
Dallas Demo	Dallas Demo Client	Valley Warehouse	Valley Warehouse	1 Passan Drive, Wilkes-Barre, PA, USA	41.296006	-75.789420	1500	<input type="checkbox"/>	<input type="checkbox"/>

Add Location

Click the +Add Location button on the Locations Screen to create a new location.

Locations
Go Back

Site Code

Name

Address

Latitude

Longitude

Radius

Default Home Location?

Return Location?

Create Location

The **Site Code** and **Name** are determined by the Client. Enter the physical address (or business name) into the **Address** field. This field is supported by Google Maps. A pin will appear in the **Map** on the right side of the screen. The pin can be moved to the exact location desired. It is possible to use the person icon to get a street level view of the address if desired.

Latitude and **Longitude** are populated automatically and will update if the pin is moved.

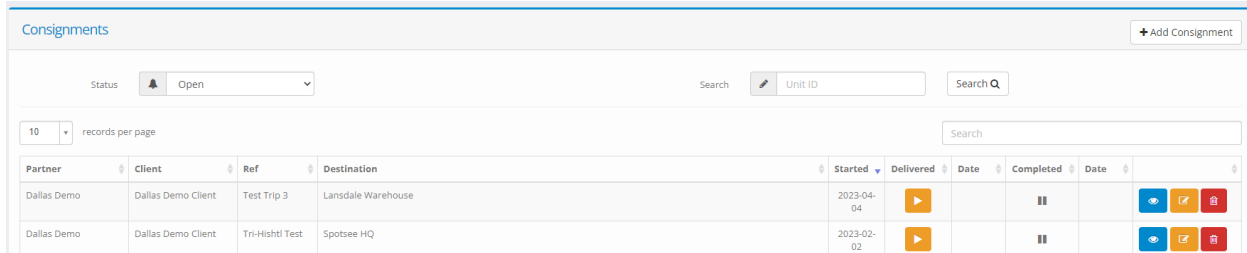
Radius is determined by the Client and represents the area around the pin that will determine if the shipment is at the defined location. The radius may be set between 100-1,500 meters.

Locations may also be assigned one of the following designations:

- **Default Home Location:** A user might choose this designation if it represents a point of origination for multiple Consignments.
- **Return Location:** A location where the SpotBot 4G should be returned to if the units are in a closed supply loop. This field allows the user to know when units have returned and are available for redeployment.

CONSIGNMENTS SCREEN

The Consignments screen allows users to create specific trips. This screen contains information relevant to a trip: the partner, client, order reference, destination, journey start date, and status/date of delivery. In cases where the SpotBot unit has been returned to its origin, the completed icon and date will be populated.



The screenshot shows the 'Consignments' screen with a table of two entries. The table has columns for Partner, Client, Ref, Destination, Started, Delivered, Date, Completed, and Date. The first entry is for 'Dallas Demo' with 'Dallas Demo Client', 'Test Trip 3', 'Lansdale Warehouse', started on '2023-04-04', and a 'Delivered' status with a play icon. The second entry is for 'Dallas Demo' with 'Dallas Demo Client', 'Tri-Hishtl Test', 'Spotsee HQ', started on '2023-02-02', and a 'Delivered' status with a play icon. There are also action icons (refresh, edit, delete) for each row.

Partner	Client	Ref	Destination	Started	Delivered	Date	Completed	Date
Dallas Demo	Dallas Demo Client	Test Trip 3	Lansdale Warehouse	2023-04-04				
Dallas Demo	Dallas Demo Client	Tri-Hishtl Test	Spotsee HQ	2023-02-02				

Add Consignment

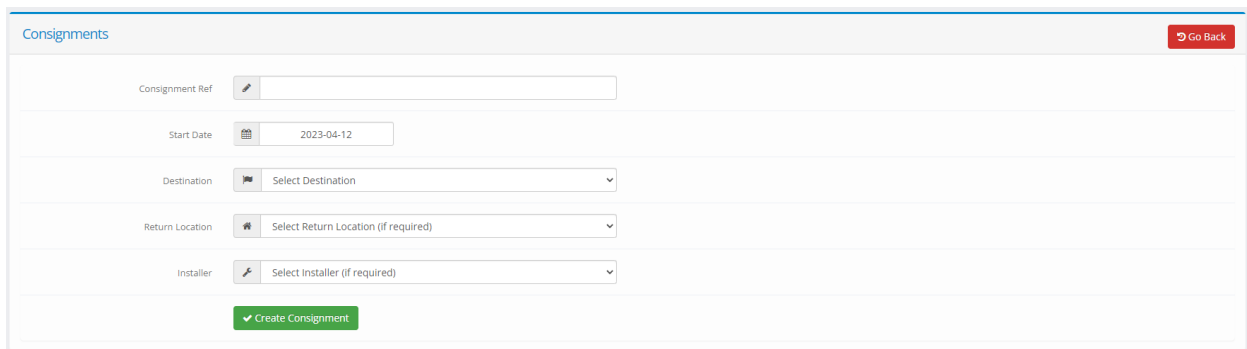
To add a consignment, select +Add Consignment. The **Consignment Ref** field is user defined and the Client should determine a name/number that is meaningful for them.

The **Start Date** defaults to the current date but should be adjusted to reflect the date that the journey is to begin, and the unit will start recording.

All Locations defined by the user will be available as options in the **Destination** and **Return Location** drop down menus. The user should select the appropriate, pre-defined, location for each. The **Return Location** is the address where the SpotBot unit will be returned at the end of a journey.

Note, there is also an option for the user to identify an **Installer**. This option is used by some clients to identify specific parties that are responsible for receiving the assets at the destination location. Currently, installers are set up by SpotSee or a SpotSee distribution partner. Please contact SpotSee or your distribution partner to utilize this option.

Once all the desired fields have been updated appropriately, click the **Create Consignment** button to move on to the phase of adding assets to the consignment.



The screenshot shows the 'Create Consignment' form with the following fields: 'Consignment Ref' (text input), 'Start Date' (calendar icon, value: 2023-04-12), 'Destination' (dropdown menu, value: Select Destination), 'Return Location' (dropdown menu, value: Select Return Location (if required)), and 'Installer' (dropdown menu, value: Select Installer (if required)). A green 'Create Consignment' button is at the bottom.

Selecting Assets for a Consignment

When the user clicks on the **Create Consignment** button an **Assets** menu will appear. This screen allows the user to search and identify the unit or units that will be used on the consignment.

Assets

Unit ID Delivered Returned

Search for assets below

Search

Unit ID

NOTIFICATIONS GROUPS SCREEN

In addition to viewing asset and consignment information in the cloud, users may also set up notifications to be received in regular reporting intervals and when there is an alarm. To generate and distribute these reports to the appropriate parties, the user must first navigate to the **Notifications Groups Screen**.

Notification Groups + Add Notification Group

10 records per page Search

Partner	Client	Group Name	Recipients	Schedules	Default	
Dallas Demo	Dallas Demo Client	Crouch Group 1	2	2	<input type="checkbox"/>	<input type="button" value="X"/> <input type="button" value="Check"/> <input type="button" value="Lock"/>

Showing 1 to 1 of 1 entries < 1 >

Add Notifications Group

To add a **Notifications Group**, click the +Add Notifications Group button and the screen that enables configuration will appear.

Notification Groups Go Back

Group Name

Default Notification Group?

Transit Settings

Days in Transit Days at Location Days on Report

Shock Thresholds

Shock Threshold Days on Report Format

Measurement Thresholds

Minimum Temperature Maximum Temperature Days on Report

Minimum Humidity Maximum Humidity Format

The transit settings allow the user to easily identify consignments or shipments that are outside of the expected delivery timeframe. The user will define **Days in Transit** for the shipment as well as **Days at Location**. **Days on Report** references the number of days that these parameters will be monitored.

Users will also determine the monitoring thresholds for **Shock**, **Temperature**, and **Humidity** using the appropriate drop-down menus. For each condition the user may also choose to **Disable Notifications**.

The user must select the format for reporting (pdf, excel, or CSV). Once the parameters are updated, click the **Create Notifications Group** button. The screens that appear allow the user to identify the report recipients and define the reporting schedule.

Recipients
▼

Name	Email	Mobile	Consignments	Impacts	Measurements	Transit	
Please add a recipient below							

Add Recipient
▼

Name

Email

Mobile
International format

Notifications

Consignment Reports?
 Impact Reports?
 Measurements Reports?
 Transit Notifications?

Save Recipient ✓
Cancel Changes

Daily Report Schedules
▼

Scheduled Time (UTC)	Mon	Tue	Wed	Thu	Fri	Sat	Sun	Consignments	Impacts	Measurements	Transit
Please add a daily schedule below											

Add Schedule
▼

Scheduled Time Select Time Slot (UTC) ▼

Scheduled Days

Mon

Tue

Wed

Thu

Fri

Sat

Sun

Include Notifications

Consignment Reports?
 Impact Reports?
 Measurement Reports?
 Transit Notifications?

Save Schedule ✓
Cancel Changes